



CENTER FOR RENEWABLE ENERGY

Illinois State University

NEWSLETTER

OCTOBER 2010

In this Edition:

Solar Market Transformation Conference, p. 1

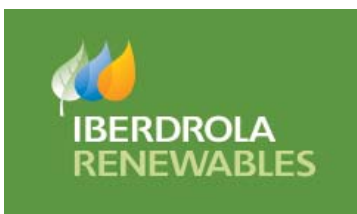
IWWG Siting, Zoning & Taxing of Wind Farms Conference, p. 2

Student Interns Share Their Experiences p. 2

Upcoming Events, p. 2

Staff, p. 2

Founding Members:

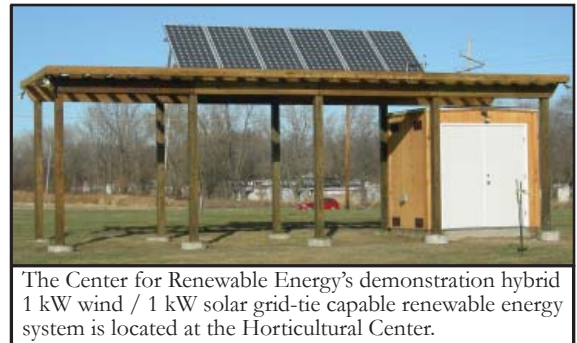


Solar Market Transformation Conference

The Center for Renewable Energy at Illinois State University, The Green Institute at Heartland Community College (HCC) and the Midwest Renewable Energy Association are hosting a **Solar Market Transformation Conference** on

October 29th, 8:30 a.m. to 4:00 p.m., at the Normal Theater, at 209 North Street in Normal, IL, as part of the Illinois Energy Expo that HCC is

coordinating at the Marriott in Normal. The conference is designed for mayors, city planners, council members, and the general public to learn about incorporating solar energy in their communities, including how the marketplace works in Illinois, local policies and initiatives already in place, and training opportunities available.



The Center for Renewable Energy's demonstration hybrid 1 kW wind / 1 kW solar grid-tie capable renewable energy system is located at the Horticultural Center.

Solar Conference Topics Include:

- What are the possibilities?
- Resource and Technology
- Marketplace and Economics
- Training and Partnerships
- Building a Solar Community

Speakers include **Mayor Chris Koos** (Normal, IL), **Mayor Larry Morrissey** (Rockford, IL), **Nick Hylla** (Midwest Renewable Energy Association), **Mark Burger** (Kestrel Development Company), **Dave Kennell** (Center for Renewable Energy, Illinois State University), and **Tim Wilhelm**, Kankakee Community College.

For the conference agenda and to register online, please visit the conference website, <http://www.apec-online.org/solarconference.html>. Registration fee is \$50 for government employees or educators, \$80 for business and industry employees. Employers who pay registration fees for attendees may be eligible for a 50% rebate, thanks to funding provided by the IL Department of Commerce and Economic Opportunity. For details, call Heartland Community College's Community Education department at (309) 268-8160.

IWWG Siting, Zoning & Taxing Conference

Mark your calendar now for the Illinois Wind Working Group's **Siting, Zoning and Taxing of Wind Farms in Illinois Conference**, on Wednesday, February 9th, at the Marriott Hotel and Conference Center, 201 Broadway, Normal, IL. The conference agenda will be online soon, and topics are planned to include a Panel Discussion of Best Practices of County Boards and Zoning Boards, Roads, Decommissioning, School District Taxation, County Ordinance Revisions, Property Value Guarantees, and a Wind Energy 101 Pre-Session.

Student Interns Share Their Experiences



Illinois State University's Renewable Energy students **Jon Dove** and **Ryan Magill** were photographed on top of a wind turbine. Both interns at Horizon Wind Energy, they were learning about quality checks of the tower, nacelle, gear box and blades.

As part of the Internship Program, student interns are required to submit Weekly Report Sheets describing their work experiences. Below is just a sample of the many different tasks performed that interested the interns during the summer internship program:

- Met tower installation
 - GIS module training
 - Presentations for landowners
 - How budget meetings work
 - Finalized Business Plan
 - Quality control inspection on a wind turbine.
 - Finalized the survey letter to landowners
- Used SCADA to find counter faults in certain wind turbines.
 - Officially mapped locations of terminal boxes and checked their connections
 - Learned how the turbines are interconnected and the safety procedures associated with bringing them off and on line
 - Learned how Avian Study will be conducted and scientific processes behind it.
 - How to physically get up through the tower and out to the top of nacelle.
 - Interviewed landowners for a survey, two phases – development and construction.
 - Environmental Health Safety meeting to prevent any environmental harm on-site.
 - CADD Training, Project Research - Analyzed pertinent weather information
 - Gained experience using electromagnetic power drills.
 - Performed calculations to determine potential for solar gain
 - Researched alternative options for pool heating other than solar thermal
 - Learned about indoor air quality and operations and maintenance practices for sustainable buildings

Would your company be interested in participating in our Internship Program

during the summer or for a semester? An internship is a departmentally approved and supervised senior college level work experience in renewable energy. Paid experiences are encouraged, and a minimum of 45 hours of work experience must be satisfactorily completed by a qualified student for each one semester hour of university credit he/she expects to obtain. For more details, please contact Dr. Randy Winter, Associate Director of the Center for Renewable Energy, at 309-438-2521 or email rwinter@ilstu.edu.



At the **Career/Internship Fair**, employers had an opportunity to network with Illinois State University students and graduates who are pursuing degrees in the areas of Renewable Energy, Construction, Safety and Interior Design. At left, **Marie Streenz of Horizon Wind Energy** talks with Renewable Energy majors **Dan Buckley** and **Lauren Knapp**. At right, **Ray George** talks with **Tyler Thompson of State Farm**.

UPCOMING EVENTS

Solar Market Transformation Conference

Friday, October 29th
8:00 a.m. to 4:00 p.m.
Normal Theatre, Normal, IL

IWWG Full Group Conference Call

Wednesday, October 13th
11:00 a.m. to 12:00 noon
Speaker: Greg Erdmann, OCAS
Topic: Wind Farm Visual Impact Mitigation Solutions: An 'On-Demand' Wind Farm Light Control System That Keeps Turbine Lights Off

STAFF

David G. Loomis, Ph.D.
Director

Dave Kennell
Associate Director

J. Randy Winter, Ph.D.
Associate Director

Jin Jo, Ph.D.
Assistant Professor of
Renewable Energy Program

Matt Aldeman
Technical Assistant

Janet Niezgoda
Coordinator

Susan Deason
Outreach & Special Projects

Pam Fuller
Office Manager

CONTACT:
Center for Renewable Energy
Illinois State University
Campus Box 5020
Normal, IL 61790-5020
309-438-7919
RenewableEnergy@ilstu.edu