



Advancing Wind Power in Illinois Conference 2009

David Loomis, Ph.D.

Center for Renewable Energy
Illinois State University

Plenary Session – Illinois Wind Working Group
July 15, 2009, 10:10 AM

Illinois Wind Working Group

David G. Loomis, Ph.D.
Associate Professor of Economics
Illinois State University

Advancing Wind Power in Illinois
July 15, 2009



IL Wind Working Group



The IWWG is an organization whose purposes are to communicate wind opportunities honestly and objectively, to interact with various stakeholders at the local, state, regional and national levels, and to promote economic development of wind energy in the state of Illinois.

IL Wind Working Group

- Part of the U. S. Department of Energy's Wind Powering America Program
- One of 34 state wind working groups across the country
- Partially funded by a grant from the U. S. Department of Energy
- Comprised of over 150 stakeholders in Illinois wind energy
- Hosted by Illinois State University



Illinois Wind Working Group

- Website:
 - www.renewableenergy.ilstu.edu/wind/
- Events:
- Siting and Zoning Conference, Peoria, February 24, 2010
- Fourth Annual Conference, Summer 2010





CENTER FOR RENEWABLE ENERGY

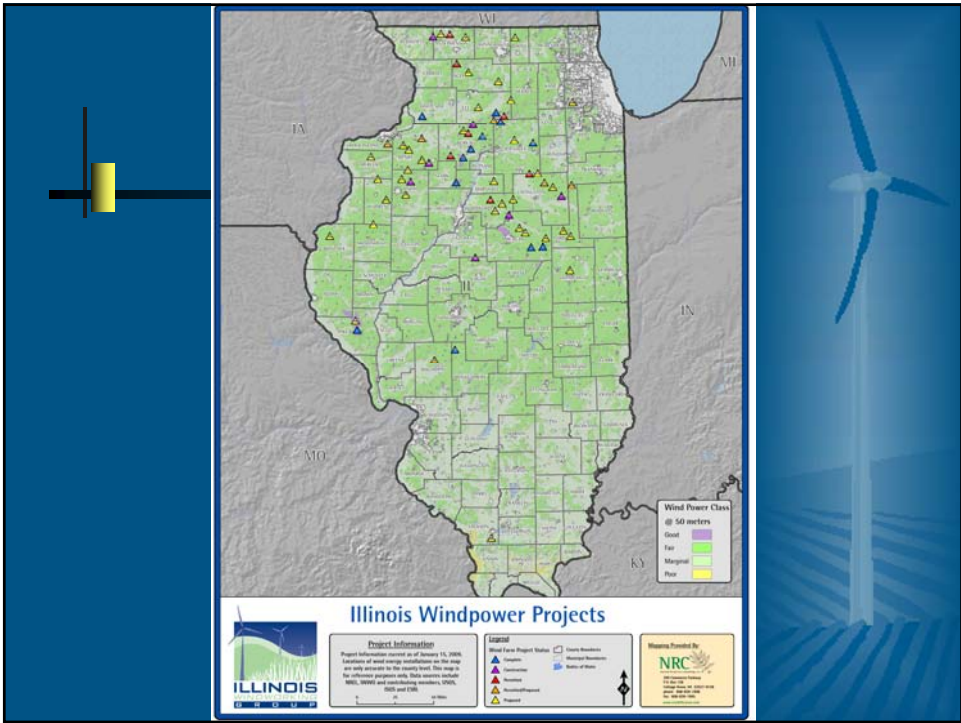
Illinois State University

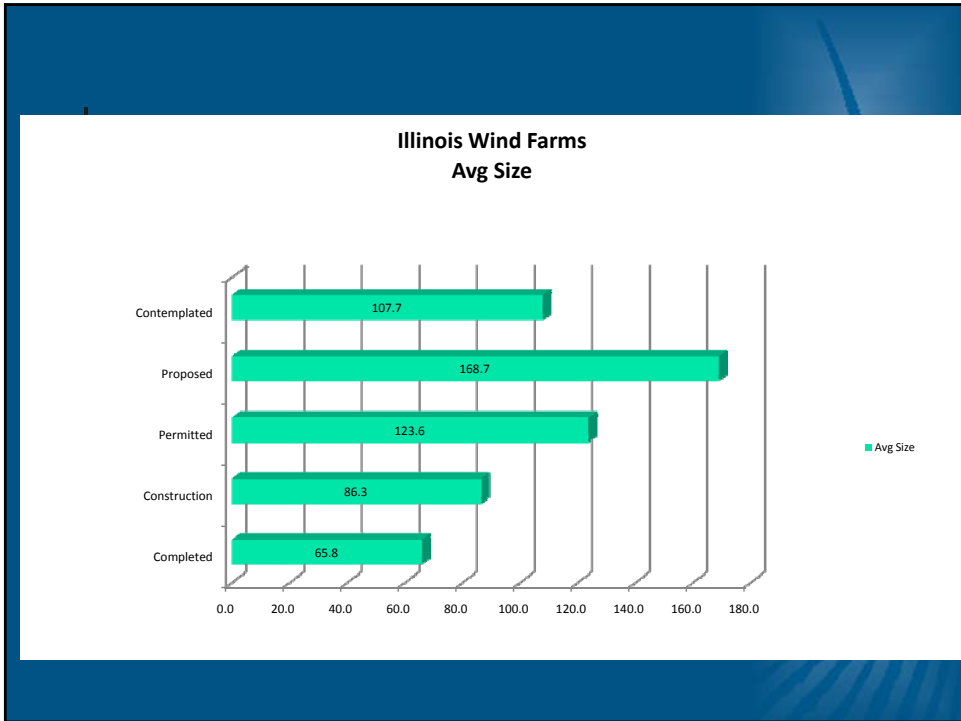
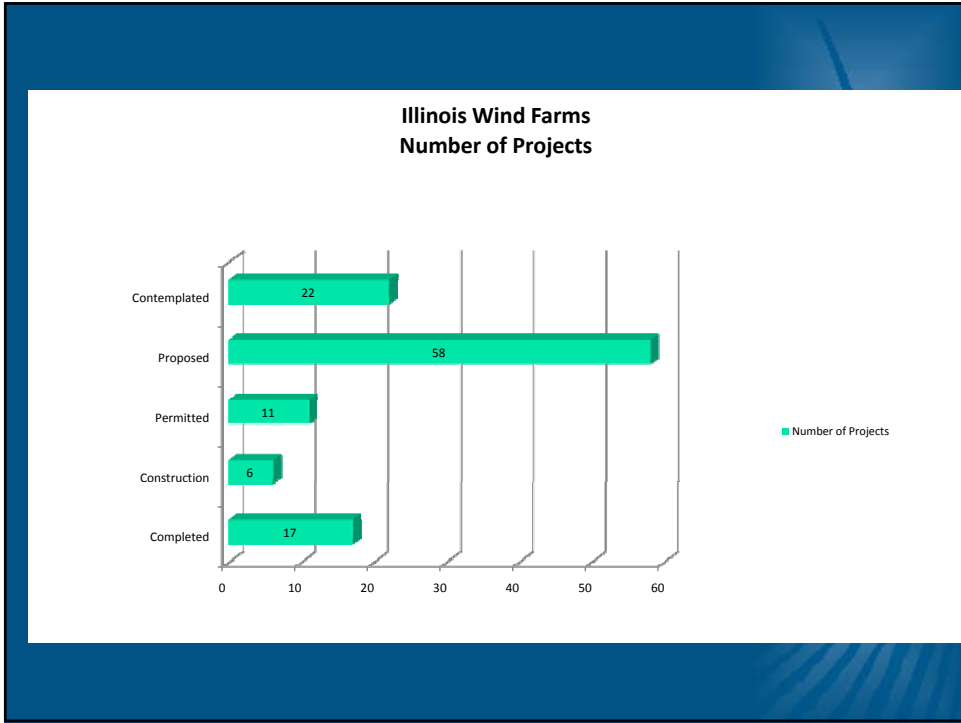
- ...works to meet the growing need for education, outreach and research in the area of renewable energy.
- Three major functional areas:
 - to enhance the renewable energy major at Illinois State University;
 - to serve the Illinois renewable energy community by providing information to the public;
 - to encourage applied research concerning renewable energy at Illinois State University and through collaborations with other universities.



Current Research

- Economic Impact of of Wind Energy in Illinois
- Economic Impact of the Wind Turbine Supply Chain
- Impact of Wind Farms on Property Value
- Public Perception of Wind Energy





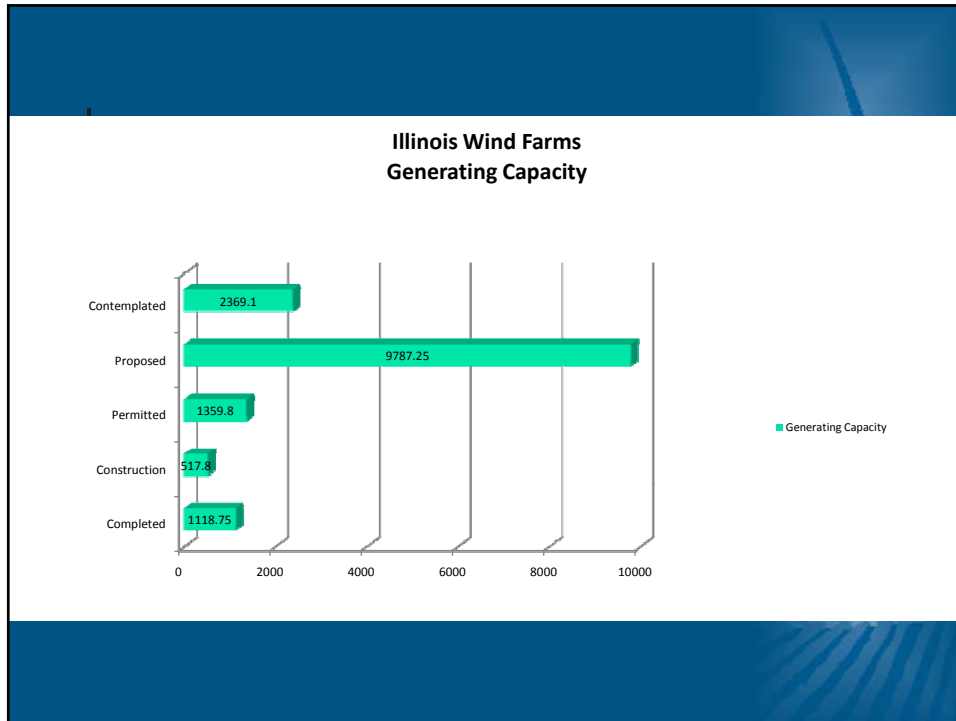


Table 1. -- Illinois Wind Farm Projects

PROJECT	LOCATION (COUNTY)	CAPACITY (MW)
Twin Groves Wind Farm Phase I	McLean	198.00
Twin Groves Wind Farm Phase II	McLean	198.00
Camp Grove Wind Farm	Marshall and Stark	150.00
EcoGrove Wind Farm Phase I	Stephenson	100.50
Rail Splitter Wind Farm	Logan and Tazewell	100.50
Grand Ridge Wind Farm Phase I	LaSalle	99.00
GSG Wind Farm	Lee and LaSalle	80.00
Providence Heights Wind Farm	Bureau	72.00
Crescent Ridge Wind Farm	Bureau	54.45
Mendota Hills Wind Farm	Lee	50.40
Agriwind Wind Farm	Bureau	8.40
Turbine Adam	Lee	2.50
Illinois Rural Electric Cooperative	Pike	1.65
Erie Community Unit School District #1	Whiteside	1.20
Gob Nob	Montgomery	0.90
Bureau Valley School District	Bureau	0.66
Sherrard High School	Rock Island and Mercer	0.60



For More Information, Contact

David G. Loomis
Illinois State University
Campus Box 4200
Normal, IL 61790
309-438-7979
renewableenergy@ilstu.edu

